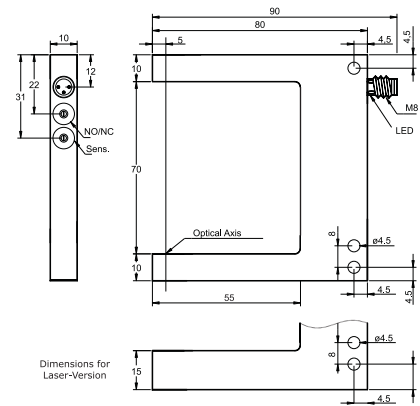
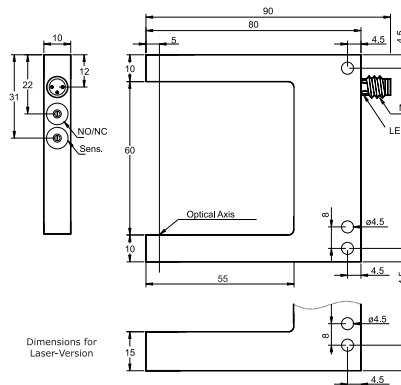
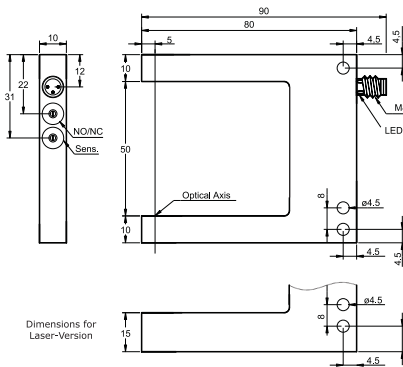
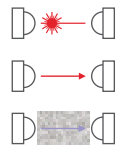
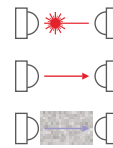
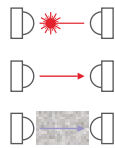
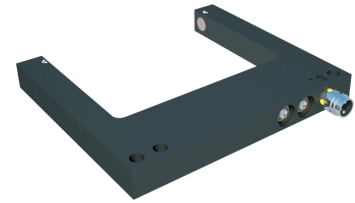
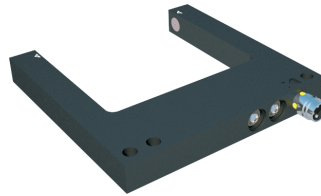
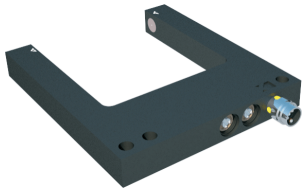


# Fork-Light-Barriers

50 mm

60 mm

70 mm



## FLx 50...

10...35 VDC, 3-wire  
 < 30 mA  
 200 mA  
 built-in  
 2.5 V @ 200 mA  
 Red-light: 2.5 kHz | laser: 10 kHz  
 built-in - self resetting  
 Red-light: Ø0.3mm | laser: Ø0.03 mm  
 270° Potentiometer  
 < 0.2 mm  
 0.01 mm  
 -10...+60 °C  
 50.000 lux  
 500 V  
 Aluminum  
 IP 67  
 Red-Light / Laser Glass Window

FLE50-PS/M8  
 FLE50-NS/M8  
 FLA50-PS/M8  
 FLA50-NS/M8  
 FLD50-PS/M8  
 FLD50-NS/M8

M8/3...

## FLx 60...

10...35 VDC, 3-wire  
 < 30 mA  
 200 mA  
 built-in  
 2.5 V @ 200 mA  
 Red-light: 2.5 kHz | laser: 10 kHz  
 built-in - self resetting  
 Ø 0.03 mm  
 270° Potentiometer  
 < 0.2 mm  
 0.01 mm  
 -10...+60 °C  
 50.000 lux  
 500 V  
 Aluminum  
 IP 67  
 Red-Light / Laser Glass Window

FLE60-PS/M8  
 FLE60-NS/M8  
 On Request  
 On Request  
 FLD60-PS/M8  
 FLD60-NS/M8

M8/3...

## FLx 70...

10...35 VDC, 3-wire  
 < 30 mA  
 200 mA  
 built-in  
 2.5 V @ 200 mA  
 Red-light: 2.5 kHz | laser: 10 kHz  
 built-in - self resetting  
 Red-light: Ø0.3mm | laser: Ø0.03 mm  
 270° Potentiometer  
 < 0.2 mm  
 0.01 mm  
 -10...+60 °C  
 50.000 lux  
 500 V  
 Aluminum  
 IP 67  
 Red-Light / Laser Glass Window

FLE70-PS/M8  
 FLE70-NS/M8  
 On Request  
 On Request  
 FLD70-PS/M8  
 FLD70-NS/M8

M8/3...