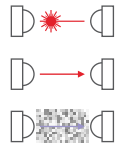
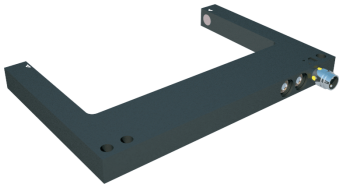
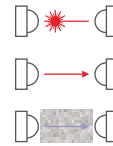
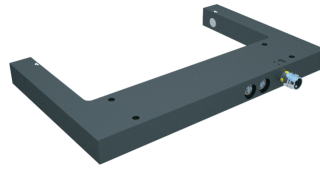


Fork-Light-Barriers

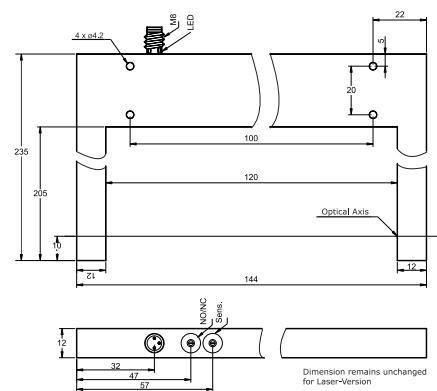
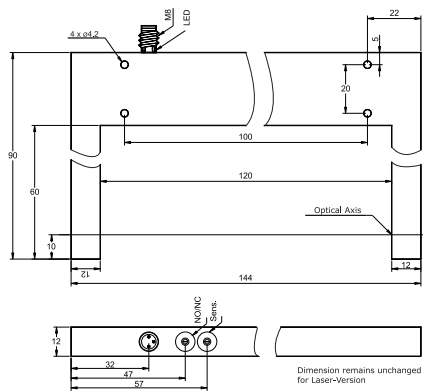
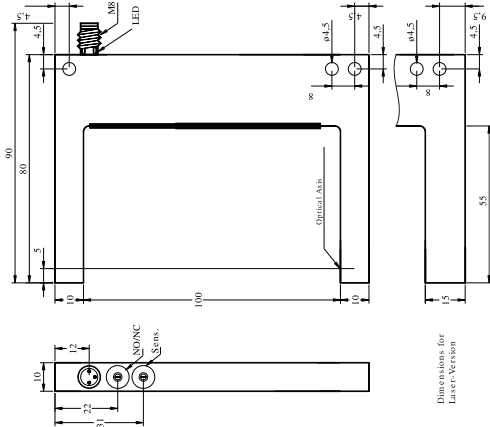
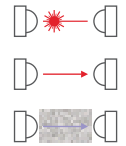
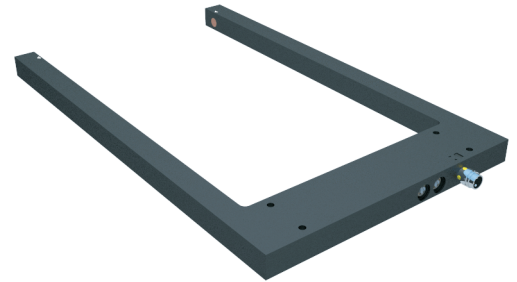
100 mm



120 mm



120/205 mm



FLx 100...

- 10...35 VDC, 3-wire
- < 30 mA
- 200 mA
- built-in
- 2.5 V @ 200 mA
- Red-light: 2.5 kHz | laser: 10 kHz
- built-in - self resetting
- Red-light: Ø0.3mm | laser: Ø0.3 mm
- 270° Potentiometer
- < 0.2 mm
- 0.01 mm
- 10...+60 °C
- 70.000 lux
- 500 V
- Aluminum
- IP 67
- Red-Light / Laser Glass Window

- FLE100-PS/M8
- FLE100-NS/M8
- On Request
- On Request
- FLD100-PS/M8
- FLD100-NS/M8

M8/3...

FLx 120...

- 10...35 VDC, 3-wire
- < 30 mA
- 200 mA
- built-in
- 2.5 V @ 200 mA
- Red-light: 2.5 kHz | laser: 10 kHz
- built-in - self resetting
- Ø 0.03 mm
- 270° Potentiometer
- < 0.2 mm
- 0.01 mm
- 10...+60 °C
- 50.000 lux
- 500 V
- Aluminum
- IP 67
- Red-Light / Laser Glass Window

- FLE120-PS/M8
- FLE120-NS/M8
- FLA120-PS/M8
- FLA120-NS/M8
- FLD120-PS/M8
- FLD120-NS/M8

M8/3...

FLx 120/205...

- 10...35 VDC, 3-wire
- < 30 mA
- 200 mA
- built-in
- 2.5 V @ 200 mA
- Red-light: 2.5 kHz | laser: 10 kHz
- built-in - self resetting
- Red-light: Ø 0.3mm | laser: Ø0.03 mm
- 270° Potentiometer
- < 0.2 mm
- 0.01 mm
- 10...+60 °C
- 50.000 lux
- 500 V
- Aluminum
- IP 67
- Red-Light / Laser Glass Window

- FLE12-/205 PS/M8
- FLE12-/205 NS/M8
- FLA12-/205 PS/M8
- FLA12-/205 NS/M8
- FLD12-/205 PS/M8
- FLD12-/205 NS/M8

M8/3...